

MANUAL WINCHES



Manual wall winches

MANISTOR®

100 and 200 kg



100 kg



200 kg

STRONG POINTS



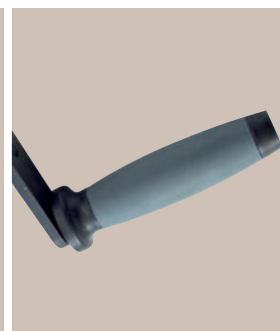
Two ratchets for maximum safety



Very safe rope clip with two pressure screws



Optimised rope winding



Two-material handle with soft touch



Snap-fitting removable handle



HUCHEZ

Technical specifications and dimensions

Use: hoisting

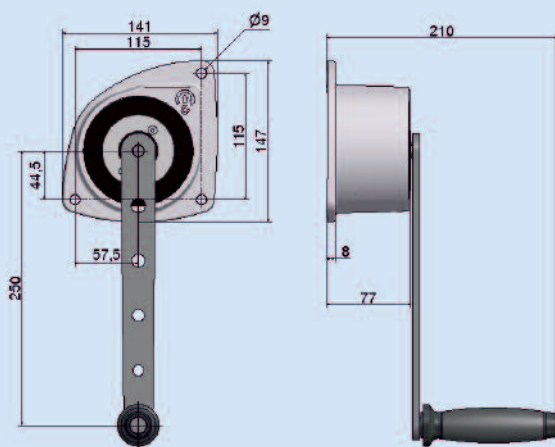
Wall-mounted position

- Sports halls
- Shows
- Stage equipment
- Industry
- Ergonomic, for increased user comfort
- Designed for outdoor work
- Light and small, easy to install.

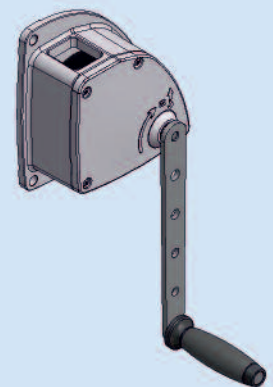
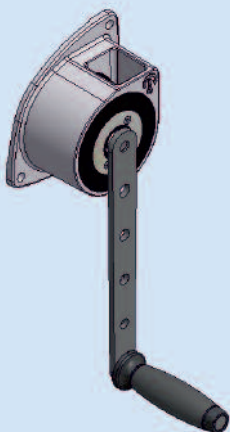
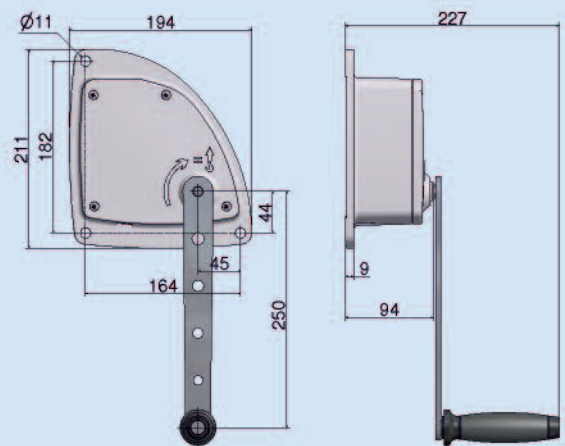
Technical properties:

- Aluminium structure
- Mechanical parts with anti-corrosion treatment
- Polymer drum
- Automatic brake
- Removable handle, two-material handle, pleasant to use
- Backstop system
- 3 attachment points

Manistor 100

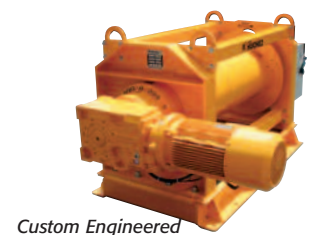


Manistor 200



Model	Capacity on 1 st layer kg	Capacity on the last layer kg	Number of layers	Rope		Handle force kg	Min. lifting per handle turn mm	Weight (bare winch, without rope) kg
				Ø mm	Max. capacity (m)			
Manistor 100	150	100	5	3	10	18	153	1,9
Manistor 200	300	200	4	4	6,5	12	50	3

Huchez, a complete range of lifting equipment



Bretteville Taljer & Maskiner AS
Griniveien 159
1359 Eiksmarka

Telefon: +47 67 16 69 90. Faks: +47 67 16 68 10
www.brettevilletaljer.no
post@brettevilletaljer.no